



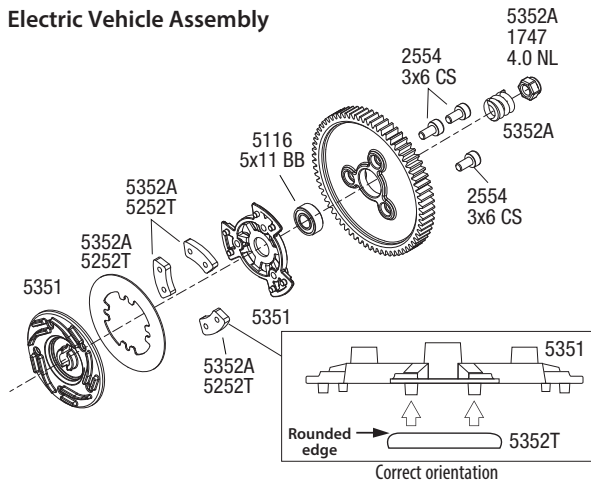
Visite la página TRAXXAS.com/manuals para descargar el instrucciones en su idioma.

Auf TRAXXAS.com/manuals können Sie anleitung in Ihrer Sprache downloaden.

Slipper Clutch Rebuild Instructions

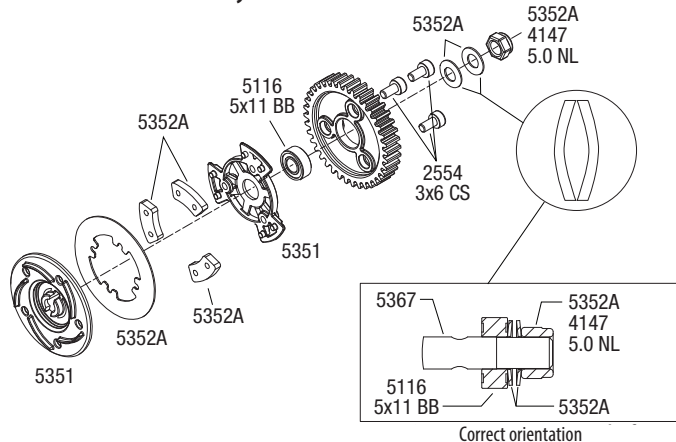
Covers Part #5352A, 5252T

Electric Vehicle Assembly



- Pay close attention to the orientation of the aluminum friction pads for part #5352T. Correct orientation of the aluminum friction pads is critical to proper performance of the slipper.
- Attach the threaded slipper nut until it's slightly snug.
Important: Do not over tighten the slipper nut.

Nitro Vehicle Assembly



- Pay close attention to the orientation of the spring washers. Correct orientation of the spring washers is critical to proper performance of the slipper and to avoid damaged to the seal ball bearing inside the slipper system.
- Attach the threaded slipper nut until it's slightly snug.
Important: Do not over tighten the slipper nut.